



Crown House

Melksham SN12 6ES

- Second floor retirement flat
- Two spacious bedrooms
- Located in Melksham town centre
- Brand new bathroom with walk in shower
- Communal lounge area, laundry room and gardens
- Walking distance to shops

Asking Price £117,500 Leasehold



A second floor two double bedroomed retirement flat situated in Crown House in the centre of Melksham. The accommodation comprises entrance hall with storage cupboards, kitchen, living room, main bedroom, dining room / second

Hall

8'10" x 11'8"

Doors to living room, kitchen, bedrooms, bathroom and storage cupboards, night storage heater.

Living Room

14'8" x 11'5"

Window overlooking communal garden and night storage heater.

Kitchen

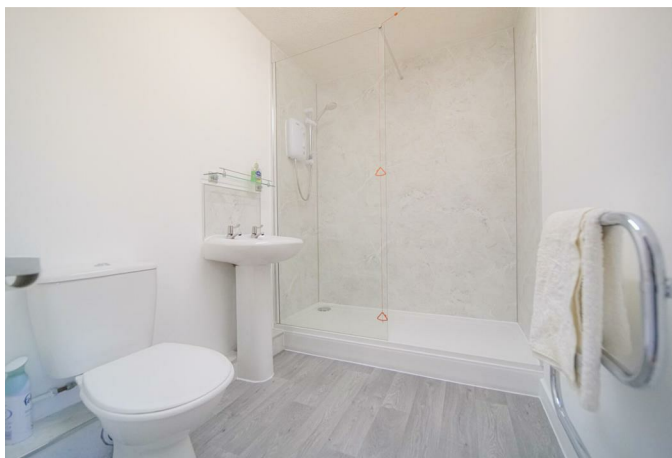
7'9" x 8'5"

Fitted with a mix of base and eye level units with worktop space over, stainless steel sink unit with single drainer, space for fridge/freezer, washing machine and cooker, electric heater.

Bedroom One

14'6" x 8'6"

Window overlooking the communal garden, built in wardrobe with sliding mirror doors and electric heater.



Bedroom Two

15'7" x 7'6"

Window overlooking communal garden, double doors to storage cupboard and electric heater.

Bathroom

5'8" x 7'6"

Brand new bathroom fitted with three piece suite comprising wash hand basin, W/C and a walk in shower.

Outside

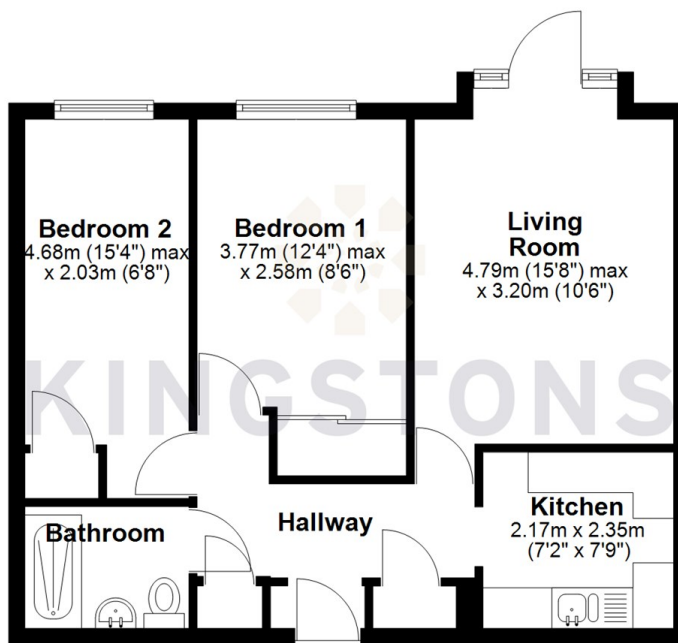
Communal lounge for residents to use and socialise, laundry room with washing machines and driers, communal garden spaces and lifts for ease of access. There is also a car park for residents and visitors to use.



Local Authority **Wiltshire**
Council Tax Band **B**
EPC Rating

Ground Floor

Approx. 52.2 sq. metres (561.8 sq. feet)



Total area: approx. 52.2 sq. metres (561.8 sq. feet)



KINGSTONS
Melksham Office

11 High Street, Melksham,
Wiltshire, SN12 6JR

Contact

01225709115
sales@kingstons.biz
www.kingstons.biz

Agents Note: Whilst every care has been taken to prepare these particulars, they are for guidance purposes only. All measurements are approximate and for general guidance purposes only and whilst every care has been taken to ensure accuracy, they should not be relied upon and potential buyers/tenants are advised to recheck the measurements.